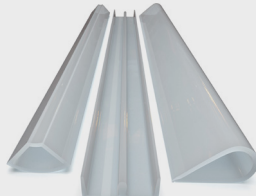
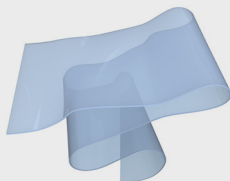
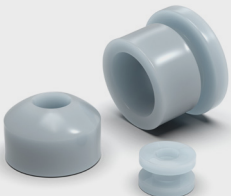


ECO Clean Room Ram Extruders

Ideal for silicone rubber and white, clear or sensitive compounds



...a lifetime of reliability and support



ECO Clean Room Ram Extruders

A stainless-steel ram extruder designed specifically for use in clean room environments, preventing processing material being contaminated by unwanted particles detrimental to production.

The Barwell ECO Clean Room is a range of high-quality and cost-saving ram extruders, designed for the efficient processing of rubber and synthetic polymer compounds.

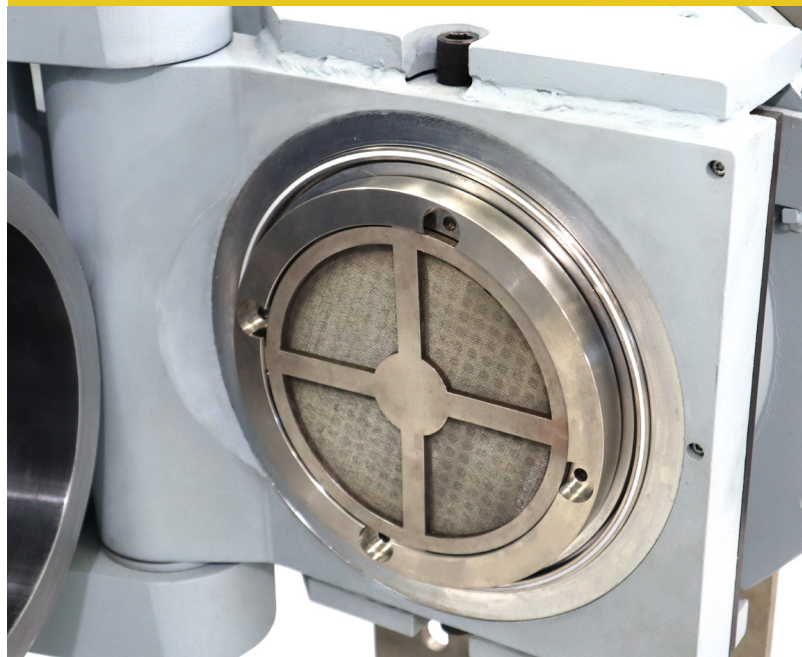
- Designed for contamination and air-free extrusion
- Direct areas of the machine which come in contact with rubber are either stainless steel, hard chromed, or hot galvanised painted to avoid material contamination
- Ideal for companies that operate with white, clear, or sensitive compounds and need to filter/strain or extrude
- Suitable for the batch-fed production of rubber strips, cord extrusions, tubes, and solid round sections
- Operator-friendly, requiring minimal user training, increasing production capability
- Robust, safe, reliable, and easy to maintain.

barwell ECO CleanRoom
Contamination Free Extrusion



EXTRUDER FEATURES

- Large selection of batch sizes available from (1-80 Litres)
- Standard operating pressure of 240 bar / 3500 psi for filtering needs
- Stainless Steel Ram Head
- Auto poppet valve for air free extrusion
- Manual pressure control for extrusion speed
- Special accessories include stainless steel die plates, funnel feed, and special breaker (gauze) plate.



SPECIAL 'CLEAN ROOM' FEATURES

- Parts in contact with processing material are manufactured to avoid material contamination:
 - Hot Galvanised paint
 - Stainless Steel panels
 - Hard chromed Stainless Steel Ram Head
 - Hard chromed Die Plates and Funnel Feed.



OPTIONAL EXTRAS

- Foot pedal for start/stop operation during the extrusion process
- Auto-retract to load position for quick reloading during auto operation
- Rear load version
- Extended Centre for easy cleaning
- H-Series (High Pressure option – 350 bar / 5000 psi)
- Industry 4.0 upgrade to provide Process Engineers with vital information and data from all points in the manufacturing process to aid decision-making and identify key areas that require development
- Large Omron 9" (230mm) widescreen colour touch-screen operator interface
- Quick product set-up due to a 5000-product database and an auto cycle option
- Wire cutter unit to cut extrusion to the desired length
- Electrical proportional valve for controlling extrusion speed.



BENEFITS

- Contamination free production
- Low investment with a quick return
- Highly accurate production
- Consistent production
- A cost-cutting and sustainable solution
- Ease of operation
- Reduced downtime
- Improved product quality
- Processing flexibility
- Designed for safety.

HIGH PRESSURE MACHINE OPTION

Developed to meet the increasing demand for machines capable of processing tough or special materials at production rates that are not always achievable with standard ECO machines.

At 350 bar (5000 psi) it can have up to 6 times more output than a standard 210 bar (3000 psi) Extruder.

This requirement has become more important where screening or filtering of materials is essential to reduce or eliminate contamination and remove impurities within the material. Although screening or filtering of materials has always been possible with any Barwell machine, outputs levels can be unacceptable.

The H-Series Extruder with its increased compound extrusion pressure, overcomes the restriction of reduced outputs and allows production demands to be met without compromise.



PNEUMATIC SILICONE WIRE CUTTER AND CONVEYOR

Silicone is a difficult material to cut due to its sticky nature, the Barwell Wire Cutter provides an automated, safe, and effective method of cutting silicone sections as they exit a Barwell Extruder.

- Cuts extrusion to the desired length
 - ◆ 2 metre conveyor length
 - ◆ Variable speed to match the extrusion speeds
 - ◆ Extrusion cut to exact length using a photocell and sliding measuring scale
- Designed to be attached to a Barwell Extruder head
- Pneumatically powered
- Manufactured using Stainless Steel
- A special safety cover and interlock attach the conveyor to the extruder head
- Cutting system manufactured to latest CE directives (and equivalents) for safety and ease of operation
- Can be fixed directly to extruder or via a roller system
- Independent wire cutter assembly or head mounted version.

Filtering and screening of silicone can also be provided as part of the process.

Any wiring modification required needed on an existing machine to allow the cutter to function correctly will be carried out at the time of fitting.



PROCESSING MATERIAL FLEXIBILITY

Barwell Clean Room machines are capable of processing most types of compounds, including:

- Silicone
- CR
- EPDM
- NBR
- HNBR
- SBR
- FKM
- ACM
- EVA
- And many more.



APPLICATIONS

Barwell ECO Clean Room Extruders help companies to process products in a number of industries and sectors for contamination and air-free extrusion.

- Medical and Pharmaceutical
- Aerospace
- Automotive
- Construction
- Electronics
- Lifestyle and Leisure
- Oil and gas
- Extrusion profiling
- Dough moulding
- Any industry where contamination could become an issue.



ENHANCED SAFETY

Health and safety is a primary concern for those responsible for machine maintenance and operator safety.

Barwell machines are manufactured with safety in mind and are supplied with a number of features to ensure safe operation.

Barwell machines are compliant with CE regulations and equivalents.



SUPPORT

Barwell provides a lifetime of reliability and support through superior machine quality and expert service and support. As the designer and original manufacturer with over 50 years of experience, Barwell is ideally positioned to assist customers to get the best out of their machine.

- Machine specification advice
- Technical assistance
- Expert material processing advice
- Commissioning and installation
- Training packages

- Preventative maintenance and emergency repair
- Supply of genuine Barwell Spares and Consumables to ensure optimum performance

Regular servicing is an investment and will reduce processing time and cost, improve production quality and increase machine life.

barwell Support 
Advice | Spares | Service

WATCH OUR MACHINES IN ACTION!

Videos of our machines can be viewed on our website and via our YouTube channel.

Our Sales and Support departments provide expert advice on specifying the correct machine for the products you manufacture and the materials you process.



WATCH THE CLEAN ROOM EXTRUDER!





Barwell Global Ltd.

Unit 1, 9 Burrell Road, St. Ives,
Cambridgeshire, PE27 3LE United Kingdom

✉ info@barwell.com
☎ +44 (0) 1480 832 860
🌐 www.barwell.com

Barwell Global USA

2868 Westway Drive, Unit E,
Brunswick, Ohio 44212-5661 USA

✉ info@barwellusa.com
☎ +1 330 225 9557
🌐 www.barwellusa.com

barwell 

...a lifetime of reliability and support